

# CYPRriot AND OTHER EUROPEAN STUDENTS TUITION AND FEES

---

ACADEMIC YEAR 2022-2023



[unic.ac.cy](http://unic.ac.cy)



UNIVERSITY *of*  
**NICOSIA**

The tuition for the new students of the academic year 2022-2023 is based on the European Credit Transfer and Accumulation System (ECTS), which provides a clear and transparent method of calculating the semester and yearly tuition (based on the number of ECTS registered per semester/year).

<b>BACHELOR'S PROGRAMMES</b>	Language of Instruction	Total ECTS	Yearly Tuition (for 60 ECTS)
			€
<b>SCHOOL OF BUSINESS</b>			
Accounting	English/Greek <sup>1</sup>	240	8,940
Business Administration	English/Greek <sup>1</sup>	240	8,940
Energy, Oil and Gas Management	English/Greek <sup>1</sup>	240	8,940
Hospitality Management	English/Greek <sup>1</sup>	240	8,940
Management Information Systems (MIS)	English/Greek <sup>1</sup>	240	8,940
Marketing Management	English/Greek <sup>1</sup>	240	8,940
Sports Management	English/Greek <sup>1</sup>	240	8,940
Tourism, Leisure and Events Management	English/Greek <sup>1</sup>	240	8,940
<b>SCHOOL OF EDUCATION</b>			
Dance	English	240	9,900
Music	English	240	9,240
Pre-Primary Education	Greek	240	8,940
Primary Education	Greek	240	8,940
<b>SCHOOL OF HUMANITIES AND SOCIAL SCIENCES</b>			
Architecture (BAArch/MArch)	English/Greek <sup>1</sup>	240/300	8,940
Digital Communication and Mass Media	English/Greek <sup>1</sup>	240	8,940
English Language and Literature	English	240	8,940
Fine Arts	English/Greek <sup>1</sup>	240	8,940
Graphic and Digital Design	English/Greek <sup>1</sup>	240	8,940
Interactive Media and Animation	English/Greek <sup>1</sup>	240	8,940
Interior Design	English/Greek <sup>1</sup>	240	8,940
Psychology	English/Greek	240	8,940
Public Relations, Advertising and Marketing	English/Greek <sup>1</sup>	240	8,940
Social Work	Greek	240	8,940
<b>SCHOOL OF LAW</b>			
International Relations and European Studies	English	240	8,940
Law	English/Greek	240	8,940
<b>SCHOOL OF SCIENCES AND ENGINEERING</b>			
Civil and Environmental Engineering	English/Greek <sup>1</sup>	240	9,240
Computer Engineering	English/Greek <sup>1</sup>	240	9,240
Computer Science	English/Greek <sup>1</sup>	240	9,240
Data Science	English/Greek <sup>1</sup>	240	9,240
Electrical Engineering	English/Greek <sup>1</sup>	240	9,240
Human Biology	English/Greek	240	10,260
Mechanical Engineering	English/Greek <sup>1</sup>	240	9,240
Nursing	English	240	9,240
Nutrition and Dietetics	Greek	240	9,540
Oil and Gas Engineering	English/Greek <sup>1</sup>	240	9,240
Pharmacy <sup>2</sup> (5 years)	Greek	300	9,240
Physiotherapy	Greek	240	10,620
Sports Science	Greek	240	9,240
<b>MEDICAL SCHOOL</b>			
Medicine (Doctor of Medicine, MD) <sup>3</sup>	English	360	18,000/22,000
<b>SCHOOL OF VETERINARY MEDICINE</b>			
Veterinary Medicine (Doctor of Veterinary Medicine, DVM)	English	300	20,000

<sup>1</sup> The entire programme is offered in English. Additionally, a number of courses may also be offered in Greek during the first two years.

<sup>2</sup> The Pharmacy programme is a five-year, integrated Master and is charged with tuition of €9,240 for each of the 5 years of study.

<sup>3</sup> Tuition is €18,000 for each of the first 3 years and €22,000 for each of the remaining 3 years.

## MASTER'S PROGRAMMES

	Language of Instruction	Total ECTS	Tuition for the Entire Programme €
<b>SCHOOL OF BUSINESS</b>			
Blockchain and Digital Currency	English	90	12,960
Business Administration	English	90	9,630
<b>SCHOOL OF EDUCATION</b>			
Education Sciences	Greek	90	9,450
<b>SCHOOL OF HUMANITIES AND SOCIAL SCIENCES</b>			
Clinical Psychology	English	180	27,360
Counseling Psychology	English	150	22,800
Criminology	Greek	90	9,450
Digital Art and Design	English	90	9,450
Digital Media and Communications	English	90	9,450
Educational Psychology	Greek	90	12,240
School Psychology	Greek	150	20,400
Social Work	Greek	90	9,450
Teaching Greek to Speakers of Other Languages	Greek	90	9,450
Teaching English to Speakers of Other Languages (TESOL)	English	90	9,450
Theology	Greek	90	7,920
<b>SCHOOL OF LAW</b>			
Criminal Law and Addictions <sup>1</sup>	Greek	90	4,000
International Relations and Eastern Mediterranean Studies	English	90	9,450
Law	English/Greek	90	9,180
Public Administration	Greek	90	9,450
<b>SCHOOL OF SCIENCES AND ENGINEERING</b>			
Biomedical Sciences	English	90	13,320
Clinical Dietetics	Greek	120	8,880
Computer Science	English	90	9,990
Exercise Science and Physical Education	Greek	90	6,930
Oil, Gas and Energy Engineering	English	90	9,990
Physiotherapy and Rehabilitation	Greek	90	9,990
Sports Nutrition/Dietetics and Nutrition Intervention	Greek	90	9,450
<b>MEDICAL SCHOOL</b>			
Family Medicine (MSc/PgDip)	English	90/60	18,000/12,000

<sup>1</sup> Joint Degree with Aristotle University of Thessaloniki.

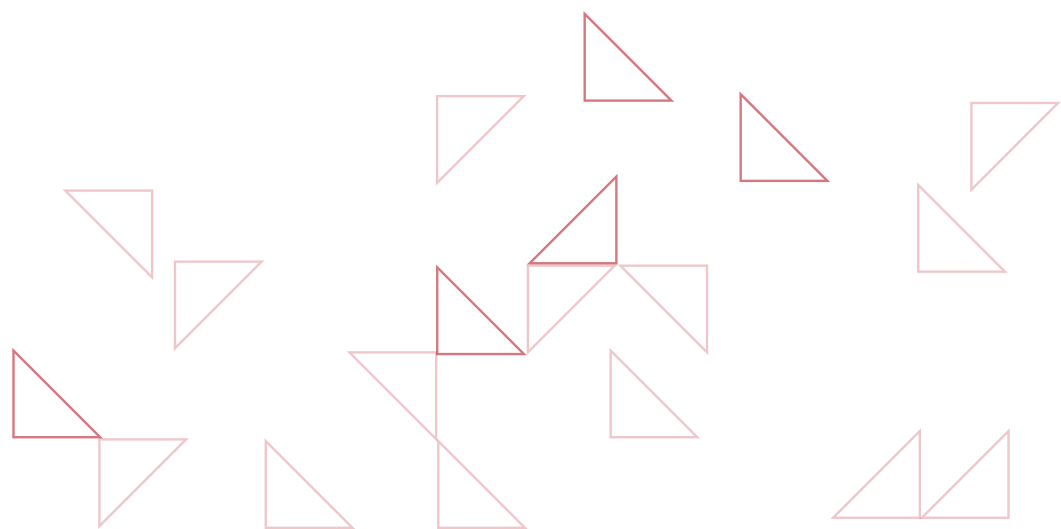
## FINANCIAL AID/SCHOLARSHIPS

The University of Nicosia offers a number of scholarships to full-time undergraduate Cypriot and other EU students, based on academic merit, athletic performance and/or financial need.

For information: Admissions Department  
T.: +357 22841528 | Email: [admissions@unic.ac.cy](mailto:admissions@unic.ac.cy) | WhatsApp/Viber: +357 95147167

## DOCTORAL PROGRAMMES

	Language of Instruction	Tuition for the Entire Programme <sup>1</sup>
		€
<b>SCHOOL OF BUSINESS</b>		
Business Administration	English/Greek	15,000
<b>SCHOOL OF EDUCATION</b>		
Education Sciences	Greek	15,000
<b>SCHOOL OF HUMANITIES AND SOCIAL SCIENCES</b>		
Criminology	English/Greek	15,000
Media and Communications	English/Greek	15,000
Psychology	English	15,000
Teaching English to Speakers of Other Languages (TESOL)	English	15,000
Theology	Greek	15,000
<b>SCHOOL OF LAW</b>		
Human Rights, Society and Multi - Level Governance <sup>2</sup>	English	15,000
International Relations and European Studies	English/Greek	15,000
Law	English/Greek	15,000
Public Administration	English/Greek	15,000
<b>SCHOOL OF SCIENCES AND ENGINEERING</b>		
Computer Science	English/Greek	15,000
Electrical Engineering	English	15,000
Exercise Science and Physical Education	English/Greek	15,000
Nursing	English/Greek	15,000
Nutrition and Dietetics	English/Greek	15,000
Oil, Gas and Energy Engineering	English	15,000
Physiotherapy	English/Greek	15,000
<b>MEDICAL SCHOOL</b>		
Medical Sciences	English	15,000
<sup>1</sup>	The tuition of €15,000 shown above represents total tuition for 3 years. For each additional academic year (maximum 3 years), the tuition is €2,000 per year.	
<sup>2</sup>	Joint Degree with the University of Padova, the University of Zagreb and the University of Western Sydney.	



## ONLINE/DISTANCE LEARNING PROGRAMMES

### BACHELOR'S PROGRAMMES

	Language of Instruction	Total ECTS	Yearly Tuition (for 60 ECTS)
			€
<b>SCHOOL OF BUSINESS</b>			
Business Administration	English/Greek	240	6,300

### MASTER'S PROGRAMMES

	Language of Instruction	Total ECTS	Tuition for the Entire Programme
			€
<b>SCHOOL OF BUSINESS</b>			
Banking, Accounting and Finance <sup>1</sup>	Greek	120	4,500
Blockchain and Digital Currency <sup>2</sup>	English	90	12,960
Business Administration	English/Greek	90	6,660
<b>SCHOOL OF EDUCATION</b>			
Education Sciences	Greek	90	6,300
Intercultural Education and Mediation <sup>3</sup>	Greek	120	5,800
Special Education <sup>3</sup>	Greek	120	5,500
<b>SCHOOL OF HUMANITIES AND SOCIAL SCIENCES</b>			
Computational Design and Digital Fabrication <sup>4</sup>	English	90	12,060
Criminology	Greek	90	6,660
Educational Psychology	Greek	90	6,660
Greek Civilization	English	90	12,060
Social Work	English/Greek	90	6,300
Teaching English to Speakers of Other Languages (TESOL)	English	90	6,300
Teaching Greek to Speakers of Other Languages	Greek	90	6,300
Theology	Greek	90	6,120
<b>SCHOOL OF LAW</b>			
International Relations and Eastern Mediterranean Studies	English/Greek	90	6,300
Law (LLM)	English/Greek	90	6,300
Law of the Economy and of the Enterprises <sup>1</sup>	Greek	120	5,400
Public Administration	Greek	90	6,300
<b>SCHOOL OF SCIENCES AND ENGINEERING</b>			
Computer Science	English	90	12,060
Data Science	English	90	12,060
Drug Regulatory Affairs	English	90	12,060
<b>MEDICAL SCHOOL</b>			
Family Medicine (MSc /PgDip)	English	90/60	18,000/12,000
Health Services Administration	English	90	12,060
Public Health	English	90	12,060

<sup>1</sup> Joint Degree with the Hellenic Open University.

<sup>2</sup> One course with 10 ECTS is offered through Massive Open Online Course (MOOC) free of charge.

<sup>3</sup> Joint Degree with the University of Patras.

<sup>4</sup> In collaboration with the University of Innsbruck.

## OTHER FEES

	On-Campus Programmes	Online/DL Programmes
	€	€
Application fee (one-off payment)	55	55
Registration fee (per semester)	26	0
Student Activities fee (per semester)	20	0
Technology fee (per semester)	15	0
Transcript fee (per copy)	5	5
Evaluation fee (transfer credits/ECTS)	52	52
Second Exam fee (per course)	65	65
Graduation Application fee	60	60

For the Medical School and the School of Veterinary Medicine programmes other fees and method of payment may apply.

## EXAMPLE OF YEARLY TUITION FOR ON-CAMPUS PROGRAMMES

For example, the tuition and other fees for a full-time student enrolled in the On-Campus Accounting Bachelor programme (Total 240 ECTS and tuition €149 per ECTS), who is registered for 30 ECTS per semester (60 per year), are as follows:

Number of ECTS	30	30	60
	Fall 2022	Spring 2023	Yearly Tuition
	€	€	€
Tuition	4,470	4,470	8,940
Registration fee (per semester)	26	26	52
Student Activities fee (per semester)	20	20	40
Technology fee (per semester)	15	15	30
	<b>4,531</b>	<b>4,531</b>	<b>9,062</b>

**Note:** Other fees, including Transcripts, Evaluations, Second Exams, and Graduation Applications are charged when the service is requested.

## METHOD OF PAYMENT OF TUITION AND OTHER FEES

(the above fees are included)

	Fall 2022		Spring 2023
	€		€
September (down payment)	1,000	February (down payment)	1,000
31/10/2022	883	31/03/2023	883
30/11/2022	883	30/04/2023	883
31/12/2022	883	31/05/2023	883
31/01/2023	882	30/06/2023	882
	<b>4,531</b>		<b>4,531</b>

For information about the various payment options please visit the University's website at [unic.ac.cy](http://unic.ac.cy)

## NOTES

- 1 According to the education system followed by the University of Nicosia, tuition is calculated and charged according to the number of ECTS a student is enrolled in every semester. Some students may need to take pre-university English courses (based on their score in the English Placement Test). These courses carry additional teaching hours per week and fewer ECTS and the tuition is based on the teaching hours.
- 2 Normal (full) attendance corresponds to 30 ECTS per semester (60 ECTS per year).
- 3 The University offers scholarships to undergraduate full-time students based on various criteria (high school leaving certificate, participation in sports activities, families with financial difficulties, large families, etc.). More information about scholarships can be obtained from the admissions department.
- 4 Scholarships/financial aid, apply to tuition and are deducted from the 4 monthly instalments of each semester.

### Contact us

46, Makedonitissas Avenue  
CY-2417, P.O.Box 24005, CY-1700  
Nicosia, Cyprus

Tel.: +357 22841528  
Email: [admissions@unic.ac.cy](mailto:admissions@unic.ac.cy)  
WhatsApp/Viber: +357 95147167